



## **Marquez Elementary School Reconstruction Project**

Community Meeting

July 23, 2025

# Agenda

- I. WELCOME & MEETING LOGISTICS
  - LORENA PADILLA-MELENDEZ, DIRECTOR, COMMUNITY RELATIONS, LAUSD
- II. PROGRESS UPDATE OF ENVIRONMENTAL WORK
  - CARLOS TORRES, DIRECTOR, OFFICE OF ENVIRONMENTAL HEALTH & SAFETY
- III. UPDATE ON INTERIM CAMPUS, CAMPUS RECONSTRUCTION PROJECT SCOPE
  - TIMOTHY SPAETH, SENIOR PROJECT DEVELOPMENT MANAGER, ASSET MANAGEMENT, PLANNING & DESIGN, LAUSD
- IV. DESIGN PROGRESS
  - SAIF VAGH, ASSOCIATE PRINCIPAL, ARCHITECTURE, NAC
- V. QUESTIONS, COMMENTS & COMMUNITY ENGAGEMENT NEXT STEPS

## Zoom Webinar — How to ask questions and make comments



To ask a question or provide a comment, please use the “Q&A” icon and submit it at any time during the meeting.

# OEHS Updates

## Marquez Charter Elementary School



### Status of Environmental Work

1. ☒ USACE Household Hazardous Waste Removal (Phase 1)
2. ☒ USACE Debris Removal (Phase 2)
  - Includes site assessment and removal of any asbestos, debris (i.e. concrete, metal, ash), and surface soils (top 3-6 inches)
3. ☒ Third-Party Contractor – Debris Removal
4. ☒ Third-Party Contractor – Environmental Assessment of Soils
5. ☐ Pre-occupancy Testing and Inspection

# OEHS Updates

## Materials Tested and Analyses

### Soil

- Volatile Organic Compounds (VOCs)
- Total Petroleum Hydrocarbons
- Polycyclic Aromatic Hydrocarbons (PAHs)
- Title 22 Metals, including mercury
- Organochlorine Pesticides
- Polychlorinated Biphenyls (PCBs)
- Dioxins and Furans
- Asbestos

### Air

- Asbestos
- Fire-related VOCs
- Metals

### Surfaces (via wipes)

- Title 22 metals, including mercury
- PAHs
- Dioxins and Furans

# OEHS Updates

## Safety Measures When Students Return

### Continued Environmental Monitoring

- LA Unified Know Your Air Network Improvements
  - Enhanced air quality monitoring (PM2.5, PM10, NO2, and weather data) in real time with online public access
  - Installation at 21 schools impacted by or near reconstruction zones is scheduled for August 2025. Five high-priority schools will be equipped with multiple monitoring locations.
  - Will provide site-specific decision-making information during cleanup and reconstruction



# Campus Reconstruction Projects – Summary

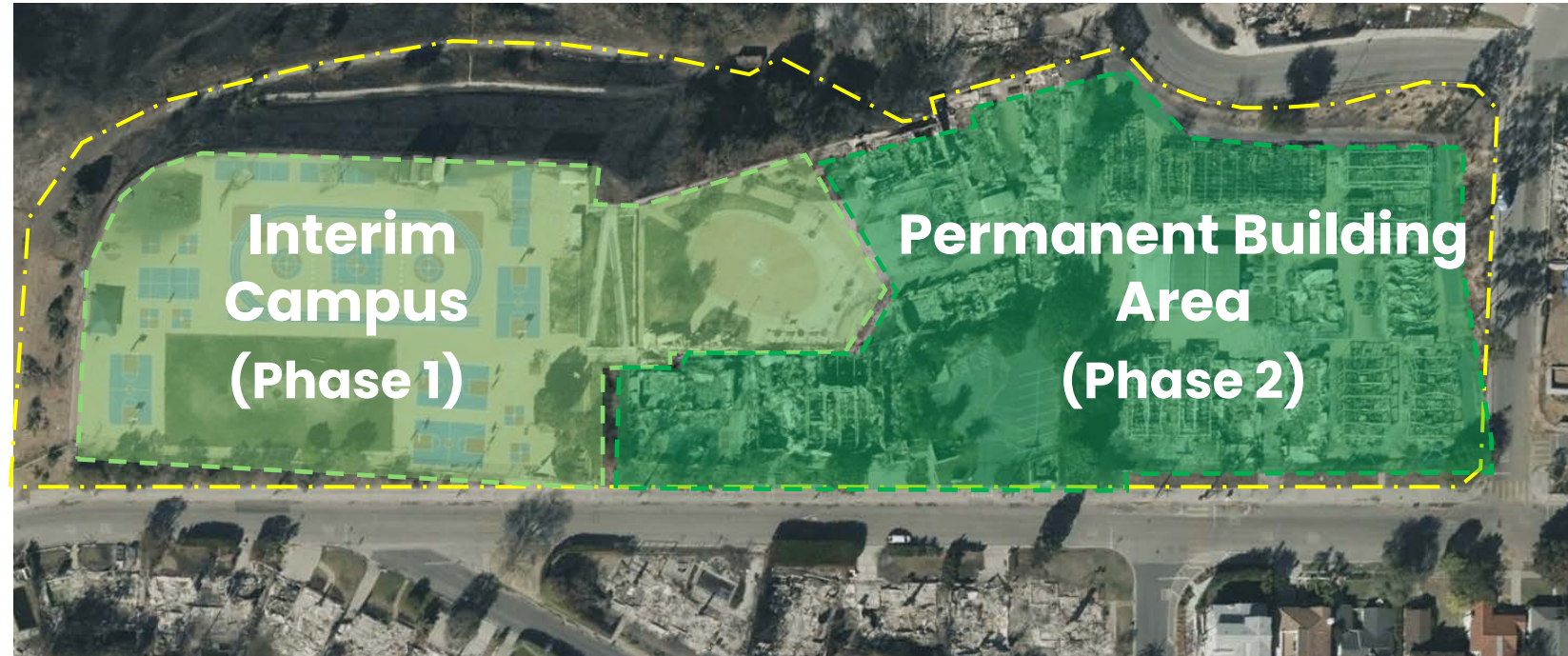
- The January 2025 Palisades Fire caused an unprecedented loss of facilities due to fire damage, with significant impacts to Marquez Charter Elementary School, Palisades Charter Elementary School, and Palisades Charter High School.
- The Projects have been developed to expedite the repopulation of the affected schools.
- These Projects replace facilities that were destroyed at each school.
- Both temporary and permanent facilities will be constructed to serve the student populations that were present prior to the fire at each school.
- The Projects for **Marquez Charter Elementary School and Palisades Charter Elementary School** will be funded by the category of need for major modernizations, upgrades, and reconfigurations to school campuses.
- Board of Education approval: June 3, 2025.



# Marquez CES Campus Reconstruction Project

## Project Scope:

- 22 new classrooms (general, TK/K, specialty), admin spaces, multipurpose room, library, food services, and maintenance facilities
- Infrastructure upgrades including utilities, landscape, and parking improvements
- Interim classrooms during design and construction of the permanent campus



**Total Project Budget     ~\$202.6M**

## Anticipated Schedule

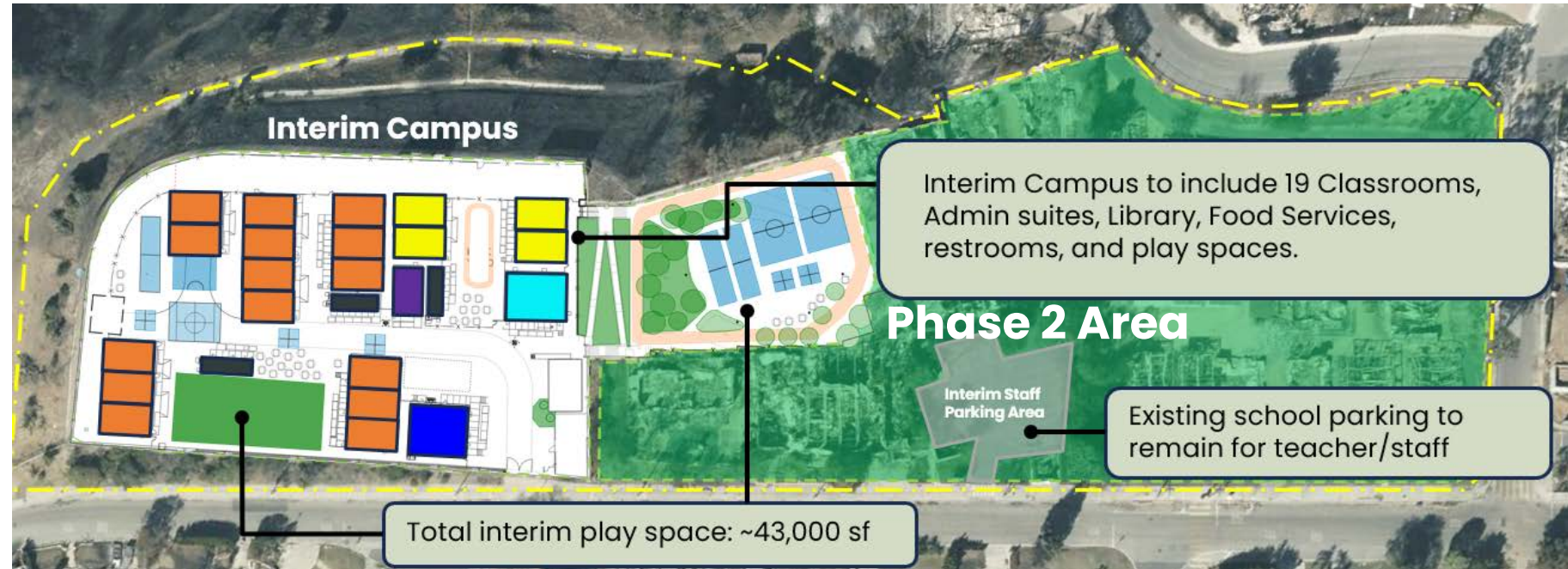
- |                                   |         |
|-----------------------------------|---------|
| • Sitework Construction Start     | Q2 2025 |
| • New Building Construction Start | Q1 2027 |
| • Construction Complete           | Q4 2028 |



# Marquez CES Interim Campus

## Phase 1 Scope:

- 22 portable buildings for classrooms, admin, kitchen and library and 3 portable restroom units have been installed
- Mosaic restoration work is ongoing
- There will be communications from the District to discuss the return to campus after the start of the school year



# Permanent Campus Program Overview

- **New Classrooms**
  - 15 General Classrooms (1<sup>st</sup> – 5<sup>th</sup> Grade)
  - 4 Kinder/TK
  - 2 Flexible Learning/Maker Space Classrooms
  - Parent Center
- **Classroom Support Spaces**
  - Collaboration Spaces, Teacher Workrooms, Storage, etc.
- **Library**
  - ~2,000 square feet
  - Designed for ~6,000 books
  - Storytelling steps

# Permanent Campus Program Overview

- **Administration**

- Reception, Offices, Health Unit, Speech Therapy, Psychologist Offices, IEP Conference Room, etc.

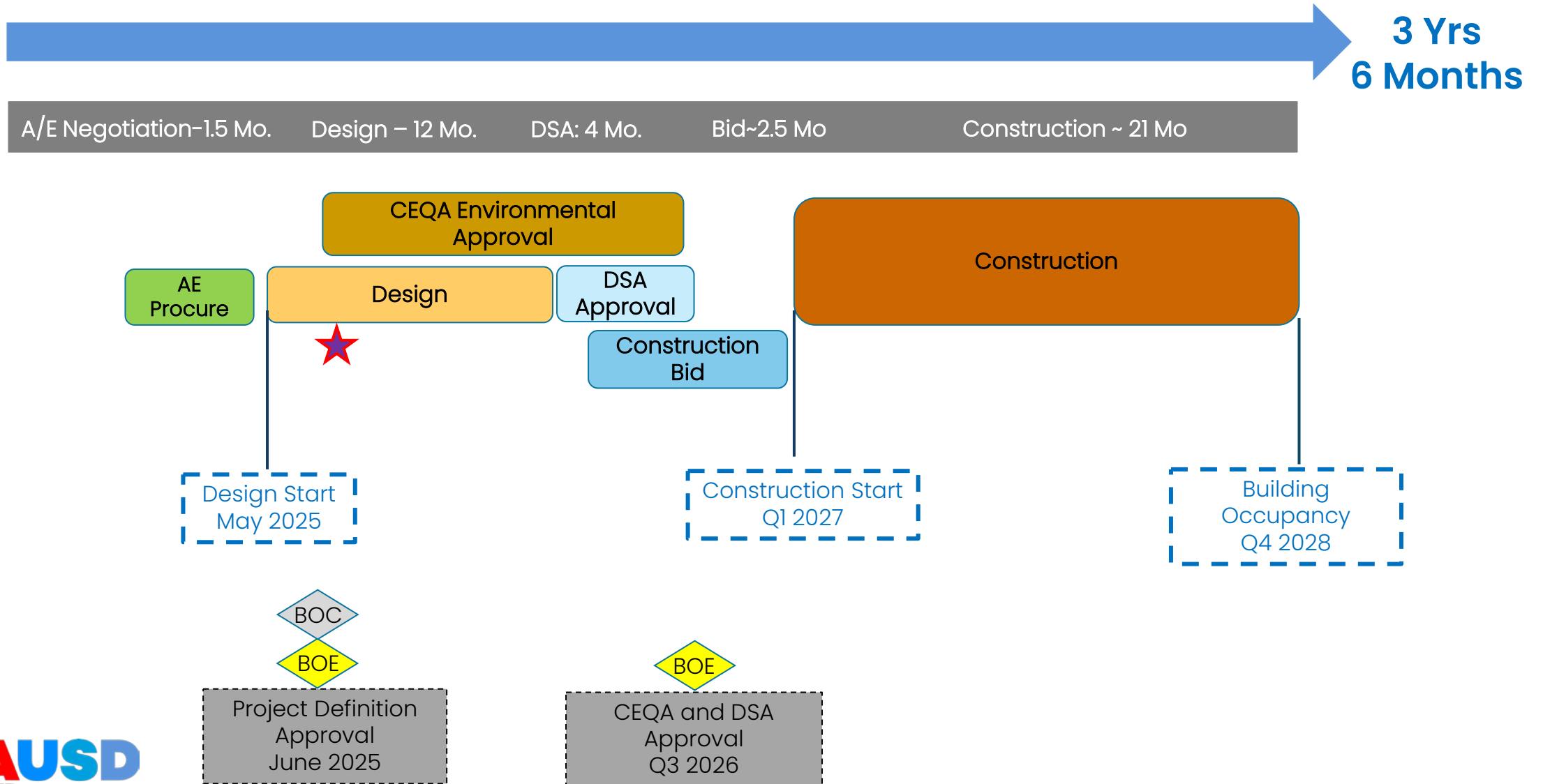
- **Food Services**

- Kitchen for cooking and warming
- Scramble Area
- Faculty Lounge

- **Multi-Purpose Room**

- Stage with Theatrical Lighting and built in projector and motorized screen.
- Can be used for indoor dining and for PE during inclement weather
- Flat floor allows for hosting events including book fairs, science fairs, etc.

# Anticipated Reconstruction Timeline



# 12-Month Design Milestones Overview

May 2025 through May 2026

## **Preliminary Schematic Design Phase: ~2 months: MAY – JUNE 2025**

Initial Phase including continuing Due Diligence and Site Analysis, Programming, and development of initial design/massing options.

Community Meeting #1

## **Final Schematic Design Phase: ~2 months : IN PROGRESS**

Development of site and floor plans, building massing, initial development of building engineering systems, and exterior environment for recommended Design Option including preliminary interior and exterior renderings.

Community Meeting #2

## **Design Development Phase: ~3 months :**

Refinement of the Design with detailed plans, sections, elevations, and material and color selections. Development and Coordination of work by project engineers.

Community Meeting #3

## **50% Construction Document Phase: ~2.5 months :**

Initial Construction Documentation development of plans, details, specifications as required for agency permitting and construction. Technical Reviews by LAUSD Staff to ensure compliance of design with LAUSD Standards.

## **100% Construction Document Phase: ~2.5 months**

Final Construction Documentation development of plans, details, specifications as required for agency permitting and construction. Submittal to the Division of the State Architect (DSA) for plan check approvals at the Conclusion of this Phase.



# Marquez Charter Elementary School

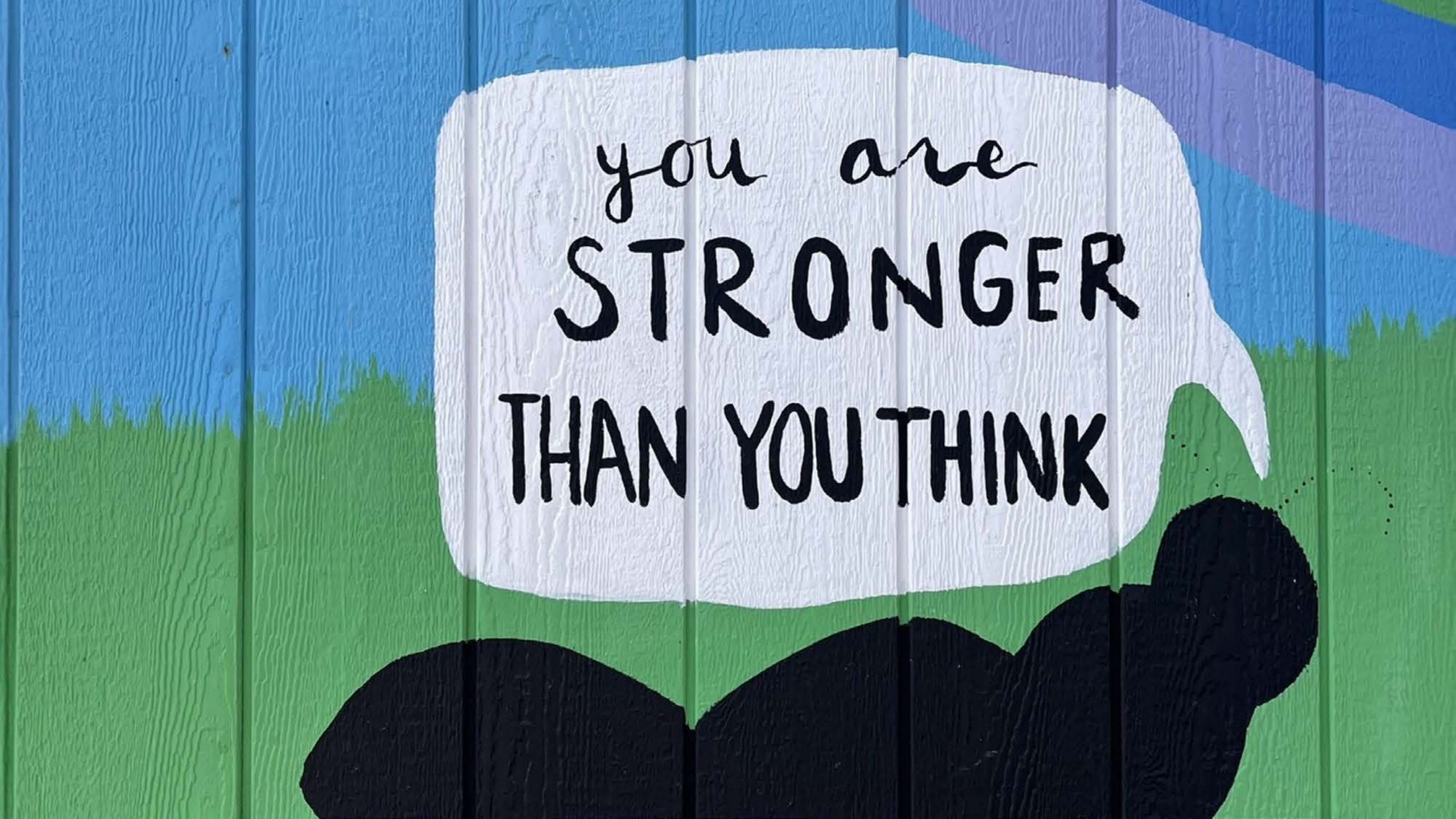
DESIGN UPDATE

JULY 23, 2025

NAC





The image features a motivational poster on a wooden plank background. The poster is a white, torn-edge paper with the text "you are STRONGER THAN YOU THINK" written in a mix of cursive and bold, blocky fonts. The background is painted with a blue sky, a green field, and a purple and blue diagonal stripe in the upper right. A large black silhouette of a person's head and shoulders is at the bottom.

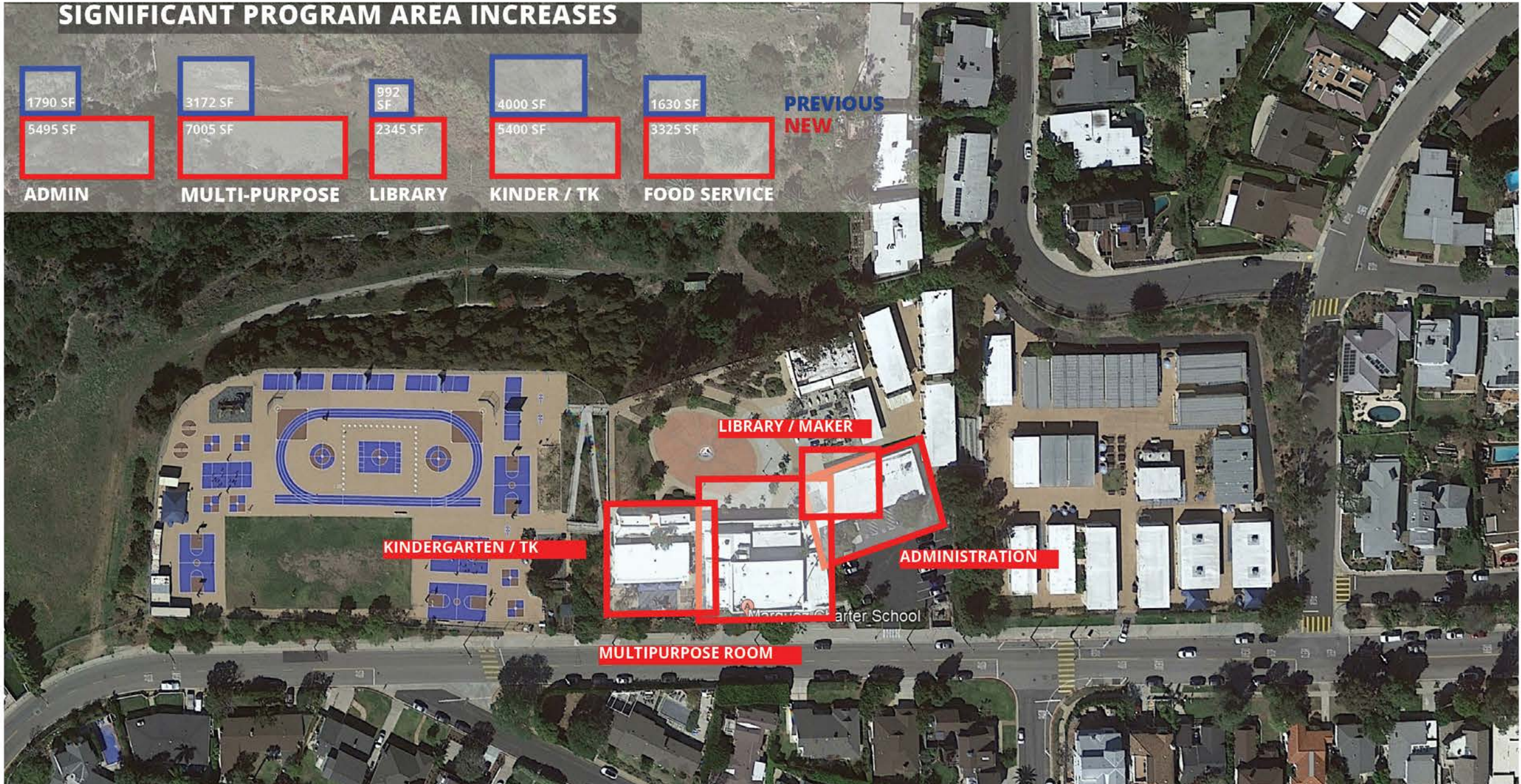
you are  
**STRONGER**  
**THAN YOU THINK**



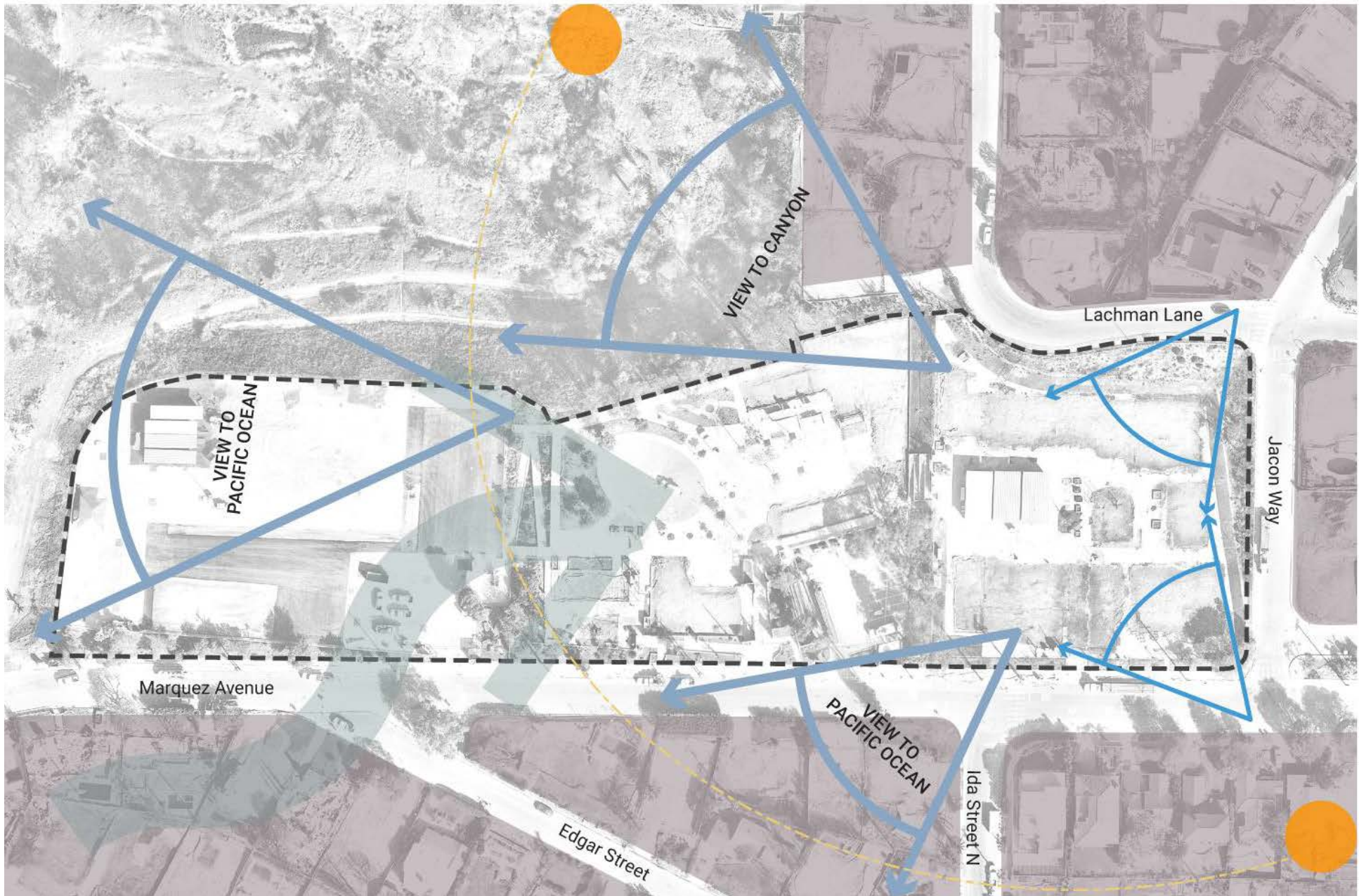
# SIGNIFICANT PROGRAM AREA INCREASES

1790 SF	3172 SF	992 SF	4000 SF	1630 SF
5495 SF	7005 SF	2345 SF	5400 SF	3325 SF
ADMIN	MULTI-PURPOSE	LIBRARY	KINDER / TK	FOOD SERVICE

PREVIOUS  
NEW







# LEGEND

- Views Out
- Views In
- Sun Path
- Wind
- Existing Residential
- Limit of Work

## Opportunities:

- Expansive views enhance site value
- Off-shore breeze offers cooling opportunities

## Constraints:

- Direct sun exposure requires heat mitigation strategies



# Resilience

- Landscape & Site Planning
- Systems and Infrastructure
- Building Materials



## DESIGN / PLANNING PRINCIPLES

- Restore Marquez campus culture
- Child-scale, minimize height and two-story structures
- Indoor / outdoor connection
- Leverage outdoor circulation, engage nature
- Improve circulation, level transitions, accessibility
- Embrace technology and programmatic enhancements
- Establish strong entry identity





**THE SECRET GARDEN**



**THE FRONT PORCH**



**THE VILLAGE GREEN**

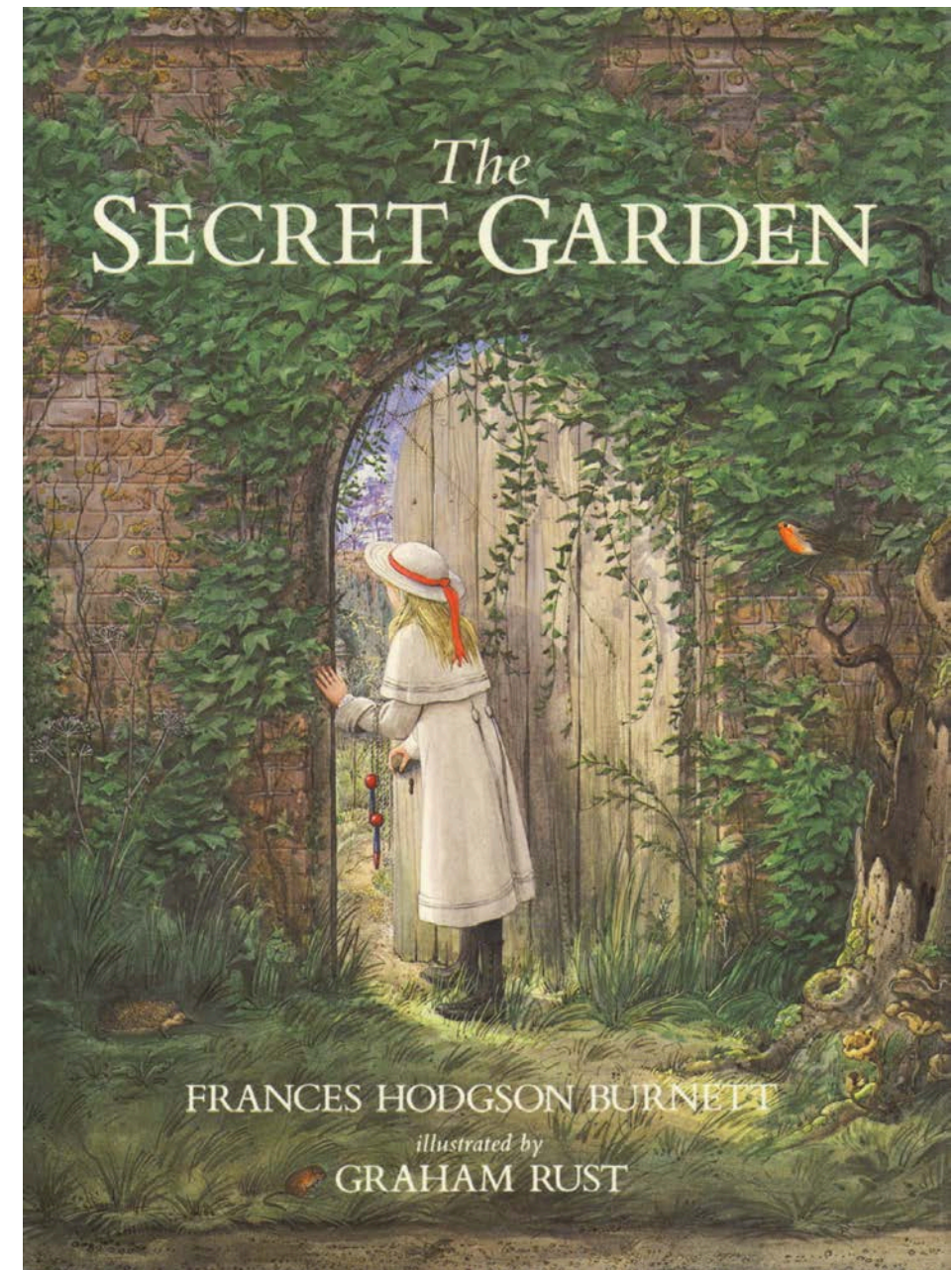
## What we heard

- Existing Stairway that connected the middle and upper level was a **bottleneck**
- The K/TK classroom can be **noisy** and should not be adjacent to other classrooms or neighbors
- **Exterior Connection** to the Outdoors is desired
- Administration Area should have **separated access** for parents/students/visitors
- **Culture of Performance** is very important at Marquez and should be designed for
- Provide space for **Enrich LA Garden** away from PE stations
- **Façade and Identity** of the school from Marquez is very important



## Unveiling Discovery

- The Transformative Power of Nature
- Sanctuary
- Hidden Beauty
- Personal Growth





## The Secret Garden

*A nurturing, inspiring, and subtly  
enchanted learning environment that  
fosters curiosity, discovery, and a deep  
connection to nature.*



# Enclosed Communal Space





# Learning and Play integrated in the garden



Every classroom has  
a green view



# Porous middle zone between class and front yard

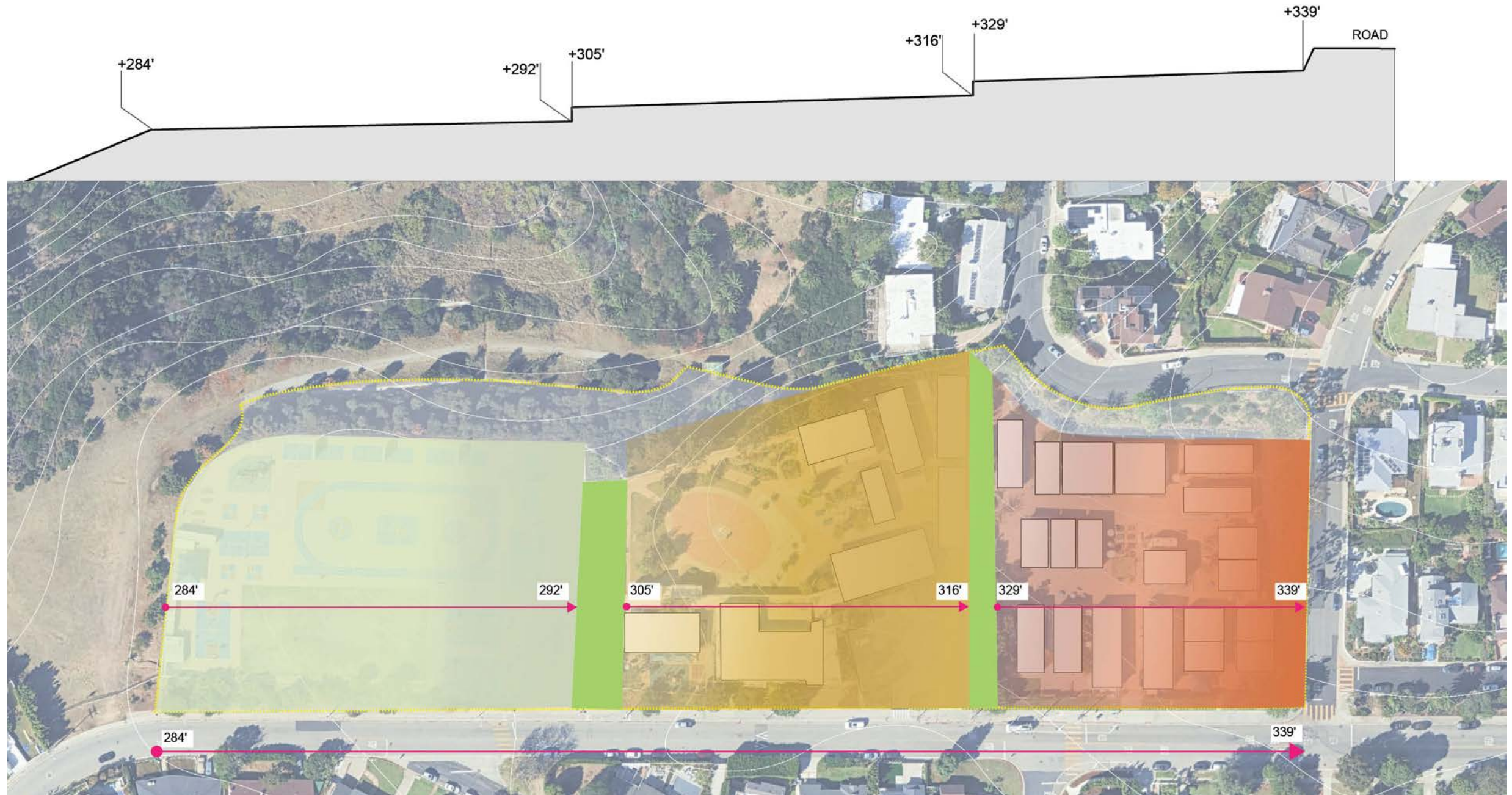




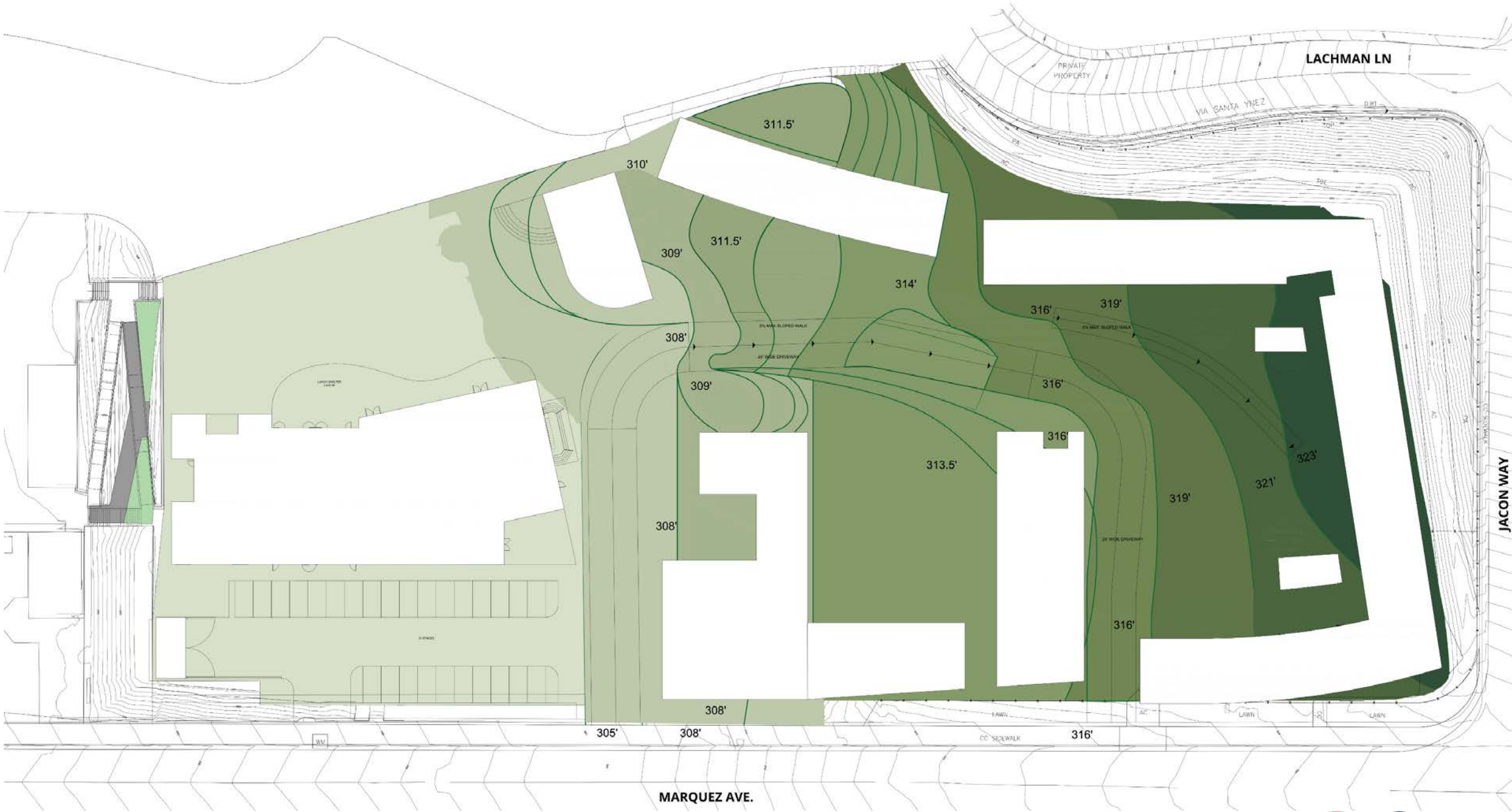


# A wandering path through the landscape

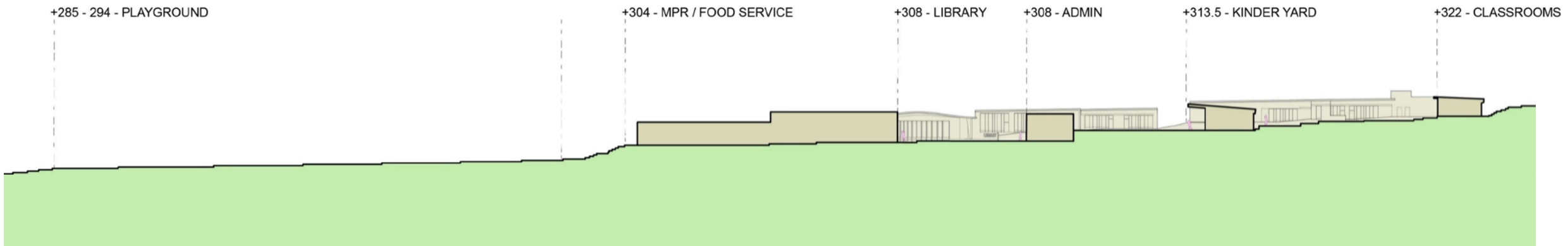




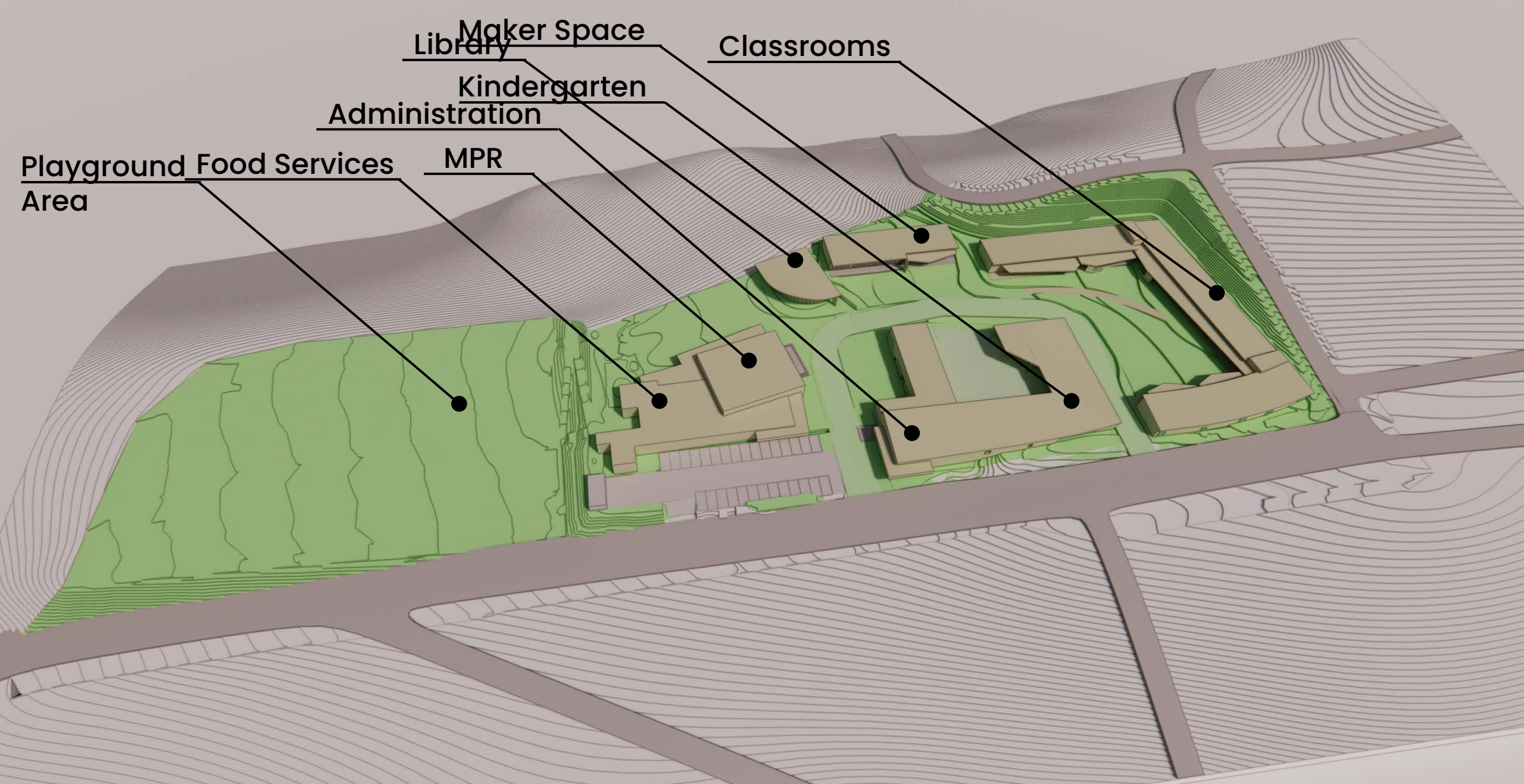




Proposed Grading



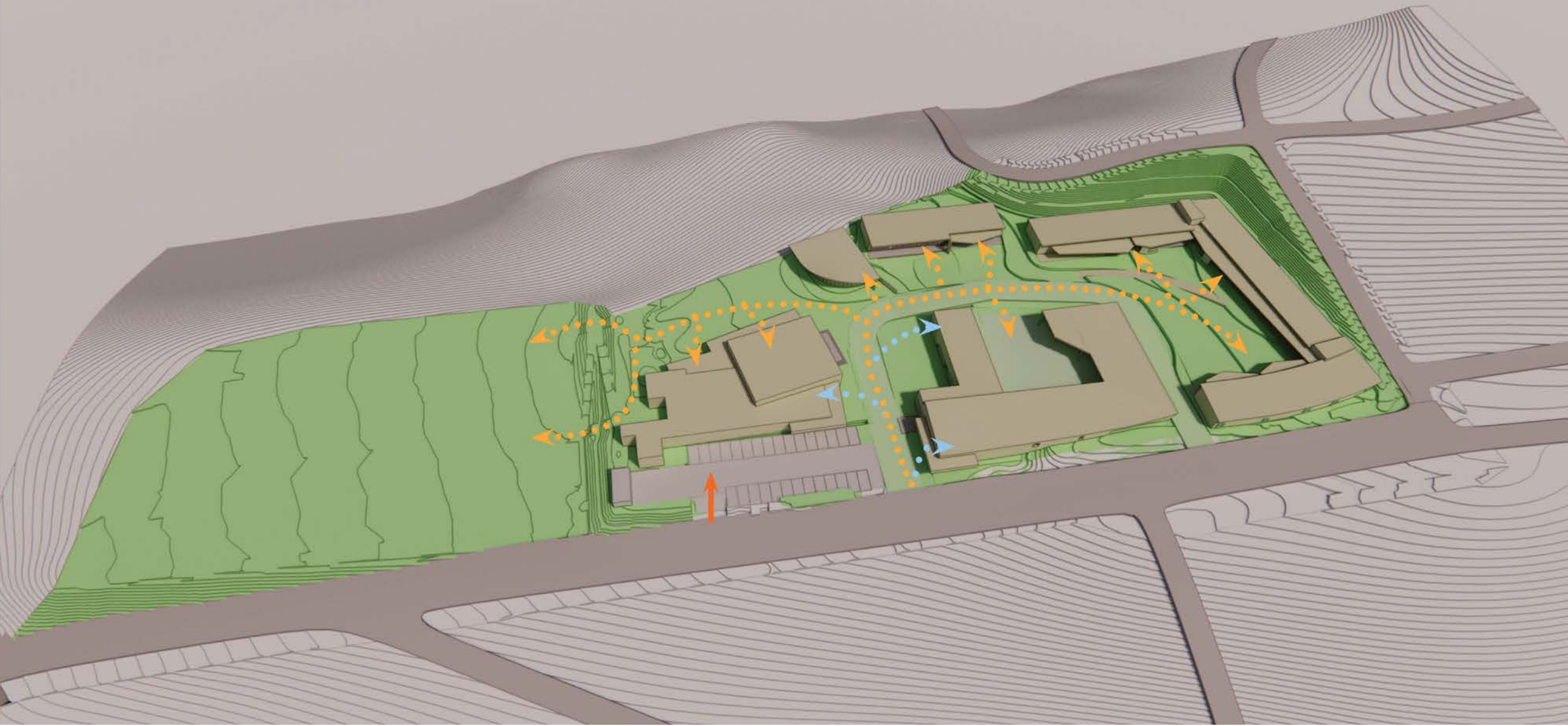






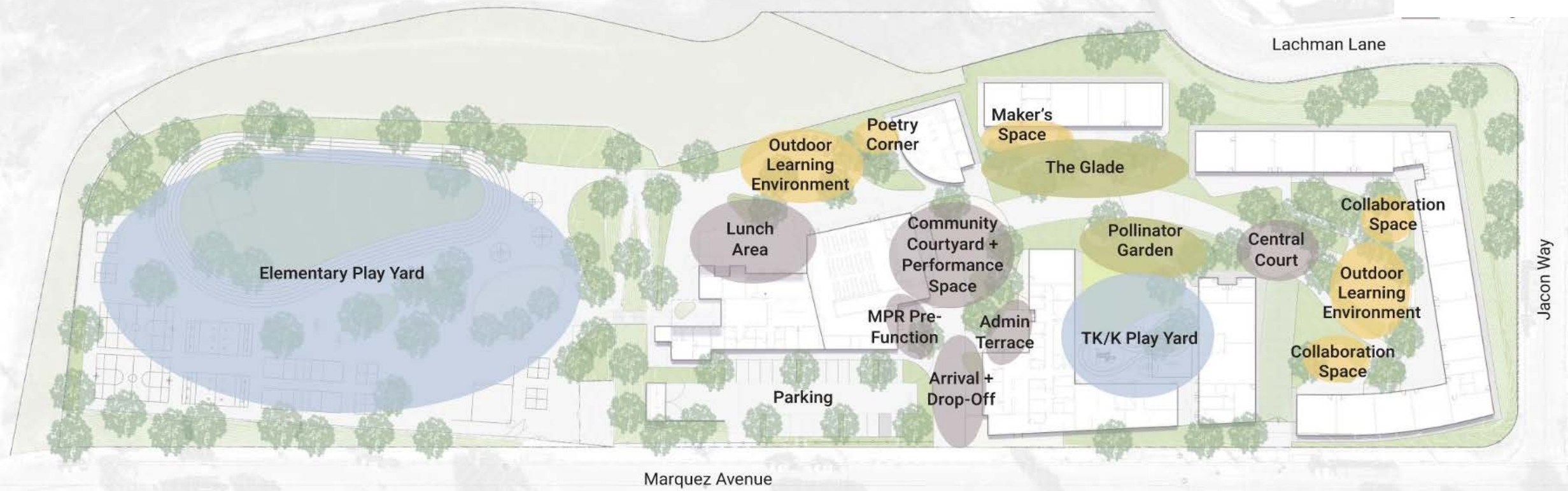






Circulation Diagram





Raised Planters



Outdoor Learning Environment



Community Courtyard

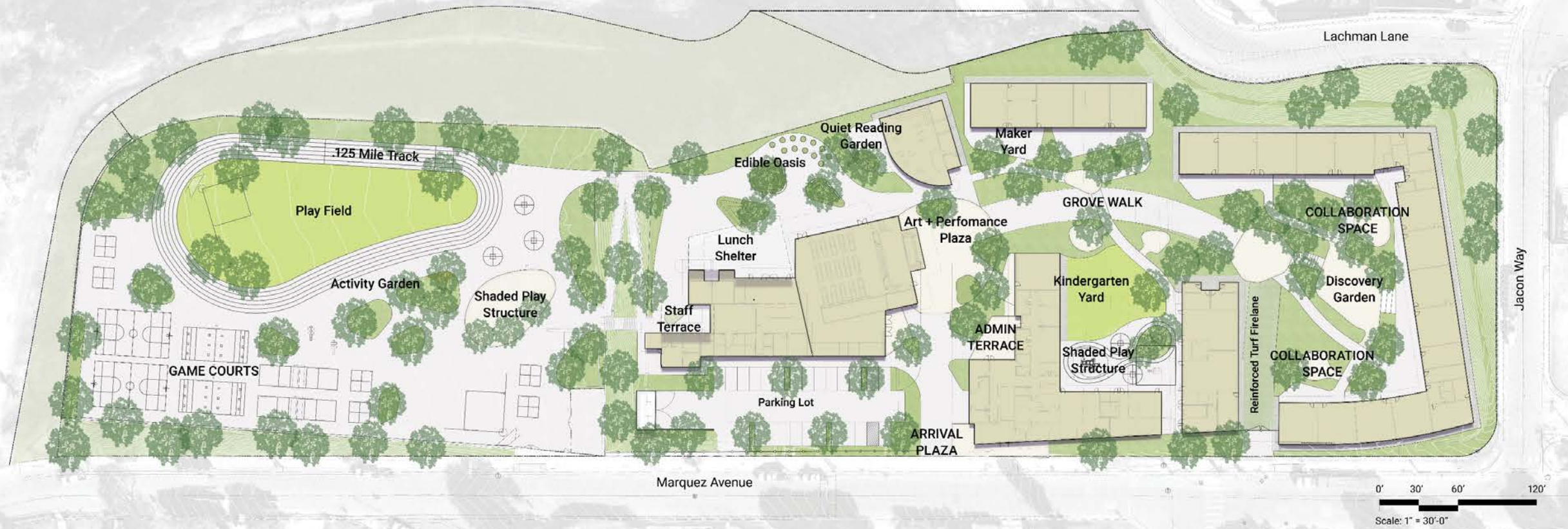


Maker Space



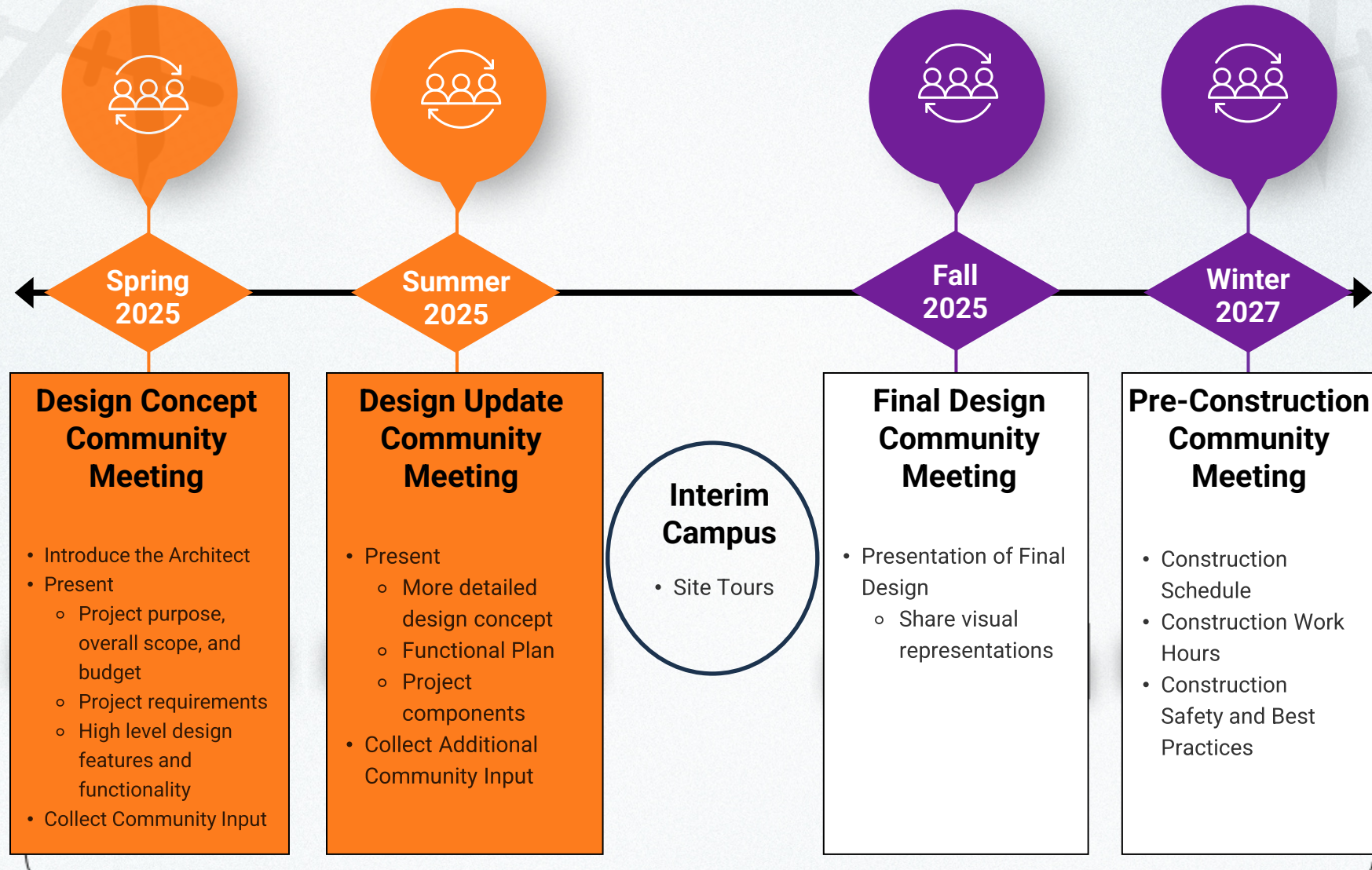
Amphitheater Seating







# FSD Community Relations Engagement Plan for the Design Process



Stakeholder engagement will continue throughout the duration of the project.



Submit questions by  
scanning the QR code.



FSD Community Relations Department: 213-241-1340

[community.relations@laschools.org](mailto:community.relations@laschools.org)

<https://www.lausd.org/facilities/community-relations>

Should you have any questions, concerns, or wish to provide other input or feedback to Region West Operations, please send an email to:

[FireRecoveryWest@lausd.net](mailto:FireRecoveryWest@lausd.net)